



2018 SIGNATURE SUNDAY SERIES

Felkin Buoy Race: 7th January
Round Tekong Race: 14th January
Round Ubin Race: 21st January
Changi Sailing Club, Singapore

Organizing Authority (OA): Changi Sailing Club

SAILING INSTRUCTIONS

1 RULES

- 1.1 The regatta will be governed by the rules as defined in the:
- Racing Rules of Sailing (RRS)
 - Maritime and Port Authority (MPA)
 - IRC Rule 2017/18
 - International Regulations for Preventing Collisions at Sea
 - Notice of Race (NOR) & Sailing Instructions (SI)

- 1.2 If there is any conflict between the Notice of Race and Sailing Instructions, this SI will take precedence

2 NOTICES TO COMPETITORS

Notices to competitors will be posted on the official notice board located at the Tekong Cove.

3 CHANGES TO THE SAILING INSTRUCTIONS

Any change to the sailing instructions will be posted before 0900 on the day it will take effect, except that any change to the schedule of the races will be posted by 2000hrs on the day before it will take effect.

4 SIGNALS MADE ASHORE

- 4.1 Signals made ashore will be displayed on the flagstaff located at the CSC jetty.
- 4.2 When flag AP flag is displayed ashore before the first warning signal, '1 minute' is replaced with 'not less than 10 minutes' in the race signal AP.

5 SCHEDULE OF RACES

- 5.1 A maximum of 3 races are scheduled as specified in the Sailing Instructions with a maximum of 1 race being sailed each day.
- 5.2 To alert boats that a race or sequence of races will begin soon, an orange flag will be displayed with one sound for at least 5 minutes before a warning signal is displayed.

6 CLASS FLAGS

Class flags will be:

Class	Flag	
IRC Division	Flag code "E"	
PY Division	Flag code "K"	
Cruising Multihull	Flag code "T"	
Beach Catamaran	Flag code "R"	

7 RACING AREA

Attachment 1 shows the location of the racing areas.

8 MARKS

Attachment 1 shows the location of the marks.

9 THE START

- 9.1 Races will be started by using rule 26 with the warning signal made 5 minutes before the starting signal.
- 9.2 The starting line will be between a staff displaying an orange flag on the CSC Jetty and CSC 1 (Club Line).
- 9.3 Boats whose warning signal has not been made shall avoid the starting area during the starting sequence for other races.
- 9.4 A boat starting later than **10 minutes** after her starting signal will be scored Did Not Start without a hearing. This changes rule A4.

10 THE FINISH

The Finishing line will be between a staff displaying an orange flag on the CSC Jetty and CSC 1 (Club Line).

11 TIME LIMITS

- 11.1 SI item no. 8 describes the time limits for each race course.. Failure to abandon will not be grounds for redress. This changes rule 62.1(a).
- 11.2 Boats finishing after the limit will be given the position. However, it will not be better than those who finish within the time limit.

12 COURSES AND SHORTENING OF COURSE

- 12.1 Courses may be shortened at any mark of the course in accordance with RRS rule 32.
- 12.2 The race may also be shortened at any point of the course by a committee boat displaying flag 'S' over a green or red flag. 'S' over green means the finish line is a north/south transit taken from the committee boat. 'S' over red means the finish line is an east/west transit taken from the committee boat. Boats may finish on either side of the committee boat.

13 PROTESTS AND REQUESTS FOR REDRESS

- 13.1 Protest forms are available at the race office located at the Front Desk. Protests and request for redress or reopening shall be delivered there within the appropriate time limit.
- 13.2 For each class, the protest time limit is 90 minutes after the last boat has finished the last race of the day or the race committee signals no more racing to day, whichever is later.
- 13.3 Notices will be posted no later than 30 minutes after the protest time limit to inform competitors of hearings which they are parties or names as witnesses. Hearings will be held in the protest room, located at the 2nd floor in the Ward Room.
- 13.4 Notices of protests by the race committee or protest committee will be posted to inform boats under rule 61.1(b).
- 13.5 Breaches of instructions 14, 15 and 17 will not be grounds for a protest by a boat. This change rule 60.1(a). Penalties for these breaches may be less than disqualification if the protest committee so decides.
- 13.6 On the last scheduled day of racing a request for reopening a hearing shall be delivered
 - (a) within the protest time limit if the requesting party was informed of the decision on the previous day;

- (b) no later than 30 minutes after the requesting party was informed of the decision on that day. This changes rule 66.

13.7 On the last scheduled day of racing a request for redress based on a protest committee decision shall be delivered no later than 30 minutes after the decision was posted. This changes rule 62.2.

14 SCORING

- 14.1 The Low Point System, of RRS Appendix A will apply.
- 14.2 The handicapping system will be the Texel ratings for all Cruising Multihulls and Beach Catamarans.
- 14.3 The handicapping system will be the Changi Handicap Numbers for PY Division.
- 14.4 The handicapping system will be the IRC ratings for all IRC keelboats.

15 SAFETY REGULATIONS

- 15.1 **Sign on and Sign off:** Each boat skipper shall personally sign-on on the forms provided at the Race Office prior to launching for the first race each day. After arriving on shore, each boat shall personally sign-off on the forms provided within the protest time limit.
- 15.2 A boat that retires from a race shall notify the race committee as soon as possible.
- 15.3 All Participating boats must be registered with Maritime and Port Authority for use in Singapore Waters.
- 15.4 Standard MPA safety requirements shall apply. In particular, **boats must keep clear of larger vessels making way in restricted channel.**
- 15.5 Prohibited Areas
- a) Chek Jawa Wetlands (1° 24'.7N, 103° 59'.6E)
Entry into the Chek Jawa Wetlands is affected by numerous restrictions and prohibitions. For further details, see Port Marine Notice No 126 of 2007.
- b) CAAS 1 (1°23'.55N, 103°59'.94E)
No vessel shall proceed south of the line of CAAS Buoy 1 All vessels are prohibited from entering, transiting, anchoring or mooring within these areas unless specific approval has been obtained from the Port Master.
- c) Changi Naval Base (1°18'.3N, 104°01'.8E)
No vessels of any description except those authorized by the Commander, Republic of Singapore Navy shall use the said prohibited area for anchorage, passage or other purposes.

16 REPLACEMENT OF CREW OR EQUIPMENT

- 16.1 Substitution of competitors will not be allowed without prior written approval of the race committee.
- 16.2 Substitution of equipment, other than damaged or lost, will not be allowed. Substitution of damaged or lost equipment will not be allowed unless authorized by the race committee. Requests for substitution shall be made to committee at the first reasonably opportunity.

17 MEASUREMENT & COMPLIANCE (IRC)

- 17.1 All boats sailing under the IRC Rule must display their Black Bands on the mast and boom and make available their sail wardrobe for measurement before race commencement.
- 17.2 The Rating Authority or a boat's Rule Authority may require a boat to be submitted for measurement at any time without giving reasons. Measurement will be undertaken by authorised measurers of IRC South East Asia. A new certificate will be issued by the Rating Authority based on the new measurement data.
- 17.3 It is at the discretion of the Organising Authority to appoint a qualified IRC measurer for random boat inspections.

18 TRASH DISPOSAL

Boats shall not put trash in the water. Trash may be placed aboard support or official boats.

19 RADIO COMMUNICATION

19.1 Except in an emergency, a boat shall neither make radio transmission while racing nor receive radio communications not available to all boats.

19.2 Race Committee will be broadcasting radio communication over VHF Channel 77 for any information & updates. Boats are advised to maintain a listening watch to the channel.

20 PRIZES

Prizes will be given as follows:

Division	Prizes
IRC Class	1 st – 3 rd for every Series & Overall Winner
Keelboat Club Racer	1 st – 3 rd for every Series & Overall Winner
Beach Catamaran	1 st – 3 rd for every Series & Overall Winner
Cruising Multihull	1 st – 3 rd for every Series & Overall Winner

- i. When there are 4 or more entries – 3 prizes will be awarded.
- ii. When there are 3 entries – 2 prizes will be awarded.
- iii. When there are 2 entries – 1 prize will be awarded.

21 DISCLAIMER OF LIABILITY

Competitors participate in the regatta entirely at their own risk. See rule 4, Decision to Race. The organising authority will not accept any liability for material damage or personal injury or death sustained in conjunction with or prior to, during, or after the regatta.

22 INSURANCE

Each participating boat shall be insured with adequate valid third-party liability insurance cover.

ATTACHMENT 1 – RACE COURSE

Race	Race Course	Time Limit
Felkin Buoy Race	Start (E to W), Serangoon (S), Perimbi (S), Seletar (S), Felkin (S), Seletar (P), Perimbi (P), Serangoon (P), Finish (W to E)	420 mins
Round Ubin Race	Start (W to E), Changi Buoy (P), CAAS 2 (P), NP1 (P), TKPK (P), Kelong West of Pulau Ubin (P), Serangoon Buoy (P), Finish (W to E)	420 mins
Round Tekong Race	Start (W to E), Changi Buoy (P), CAAS 2 (S), CAAS 1 (S), Paku (P), North Angler (P), Angler (P), South Angler (P), South Nelayan (P), Round Tekong (P) CAAS 2 (S), Changi Buoy (S), Finish (E to W)	420 mins

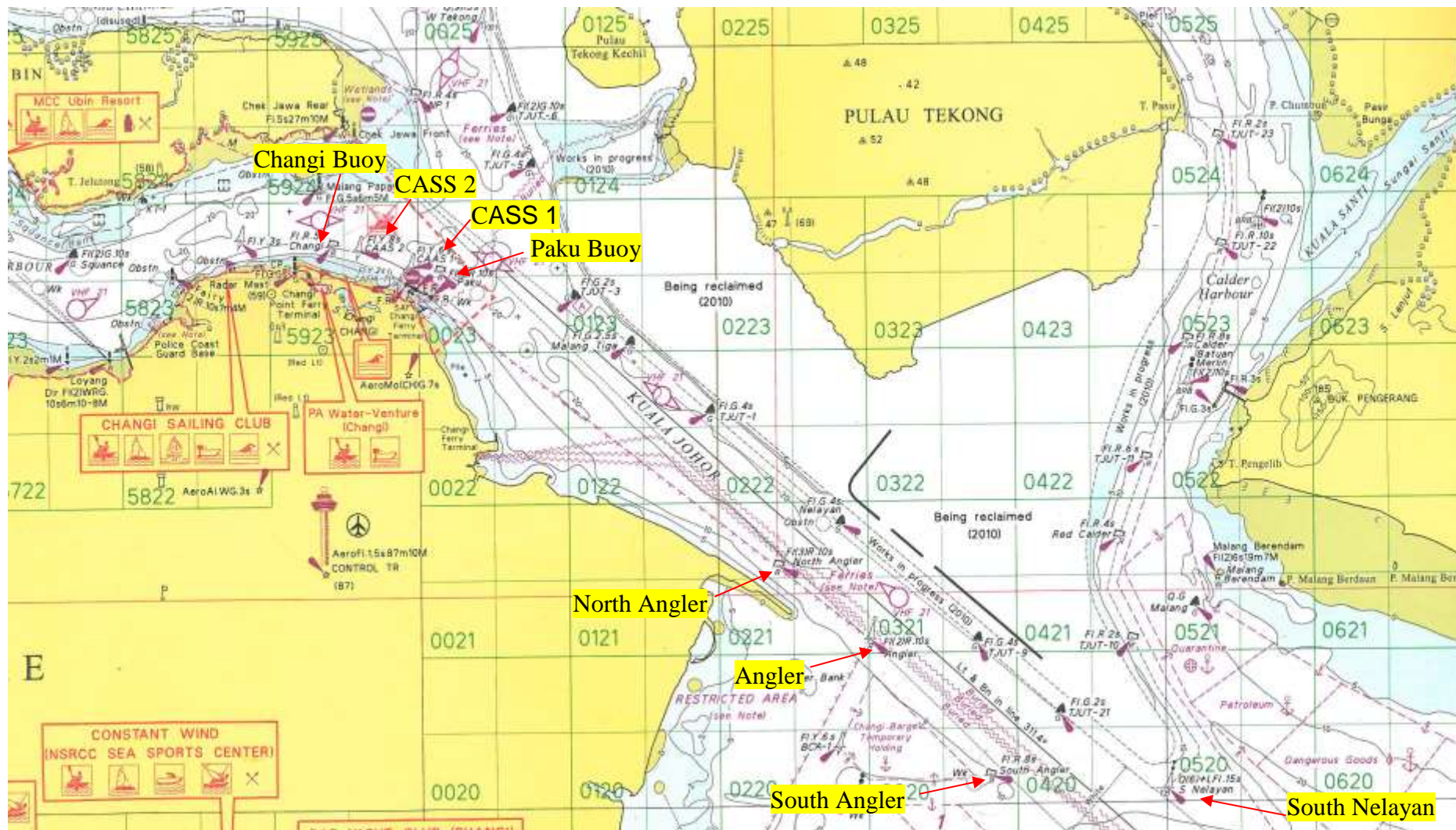
Important Note: *No boats are to sail between the fish farms, south of the Pulau Ubin and the coastline of Pulau Ubin.

LOCATION OF THE MARKS

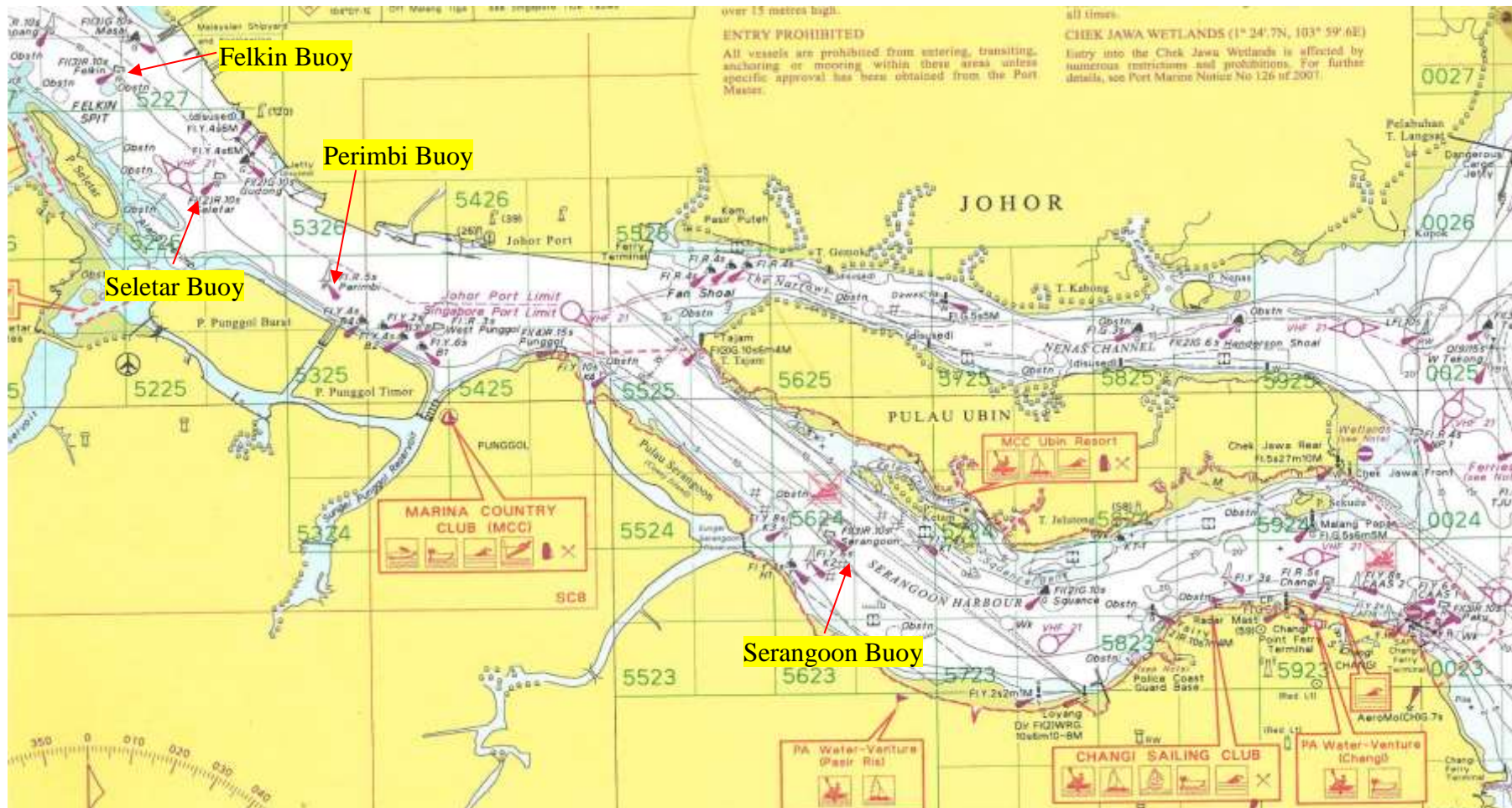
Marks	Description / Location
Start / Finish Mark	Flag staff at the end of CSC jetty and ODM (CSC1)
Angler	Lat: 1° 21.128'N Long: 104° 3.015'E
CAAS 1	Lat: 1° 23.555'N Long: 103° 59.934'E
CAAS 2	Lat: 1° 23.679'N Long: 103° 59.589'E
Changi Buoy	Lat: 1° 23.726'N Long: 103° 59.427'E
TKPK	Lat: 1° 25.389'N Long: 104° 0.049'E
North Angler	Lat: 1° 21.594'N Long: 104° 2.405'E
South Nelayan	Lat: 1° 20.090'N Long: 104° 05.009'E

Marks	Description / Location
Paku Buoy	Lat: 1° 23.546'N Long: 104° 0.147'E
Pulau Ubin	Lat: 1° 24.777'N Long: 103° 57.659'E
Serangoon Buoy	Lat: 1° 24.078'N Long: 103° 56.356'E
South Angler	Lat: 1° 20.254'N Long: 104° 3.806'E

ROUND TEKONG RACE



FELKIN BUOY RACE



ROUND UBIN RACE

